

***Danesborough Snippets for Wavendon in July 2022 –
Cllr David Hopkins / Cllr Victoria Hopkins / Cllr Alice Jenkins***

Special bulletin



In this Issue



Contact Points

Kingston Roundabout Traffic Lights

Contact point at MK Council when lights go out of sequence.

Jonjo McBride jonjo.mcbride@milton-keynes.gov.uk



...and for landscape issues ...

Phillip Snell Phillip.Snell@milton-keynes.gov.uk

Strategic Landscape and Countryside Manager

To speak with me: use Microsoft Teams or 01908 253606

Milton Keynes Council | Milton Keynes Waste Recovery Park, 9 Dickens Road | Milton Keynes | MK12 5QF

www.milton-keynes.gov.uk



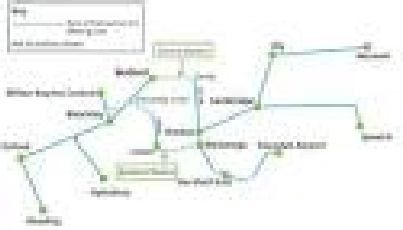
and for waste collection and upcoming changes to bin collections ...

Penny Fletcher Penny.Fletcher@milton-keynes.gov.uk

Community Engagement Manager

To speak with me: use Microsoft Teams or 07717 156040

Milton Keynes Council | Milton Keynes Waste Recovery Park, 9 Dickens Road | Milton Keynes | MK12 5QF



East West Rail

There will be a public drop-in session on **Friday 8 July 2pm to 8pm at;**
Woburn Sands Summerlin Centre, 138 Station Rd
Woburn Sands, Milton Keynes, MK17 8SG

Event overview

The drop-in events are designed to provide you with a chance to meet and speak to members of the project team.

EWR is still in the process of reviewing the feedback received during the second Non-Statutory Consultation and so do not have any new information to provide now, they want to listen to local views and will offer as much information as possible at this stage.

Get in touch

For more information about East West Rail or the event, please contact our East West Rail team as follows:

- you can email EWR at contact@eastwestrail.co.uk (External link)
- call them on 0330 1340067,
- write to them at: Freepost EAST WEST RAIL
- send them a message online at: www.eastwestrail.co.uk/get-in-touch (External link)



Network Rail wanted to let you know we'll be working in Woburn Sands from Tuesday 28 June to Friday 19 August, during daytime hours, delivering the two footpath schemes we have been working on with Milton Keynes Council.

This includes widening the pavement on Cranfield Road to 1.8 metres and putting new tactile paving points in further away from the junction, as well as building on the existing footpath in Woburn Sands recreational park, to create a full route through this.

I have included a letter which has been sent out to residents, providing more details on the work we're doing here.

If you have any questions, please do not hesitate to contact me and I'd be happy to help.

Jessica Mozejko - Community Engagement Executive – West Coast South
North West & Central Region - Square One, Manchester, M1 2NY



A Chance to Raise Funds for your Parish Council!

MK Community Foundation is offering an opportunity for your Parish Council to raise money for your area by taking part in their grand prize draw. The first prize on offer is a brand new all-electric ŠKODA Enyaq iV kindly donated by Volkswagen Group UK, a year's free energy from Octopus Energy and a PodPoint home charger!

Tickets will be available for people to buy for just £1, and participating Parish Councils will retain 50% from every ticket they sell either online or in person.

MK Community Foundation takes care of everything from the prizes to the tickets themselves, all you need to do is sell!

Find out how you can take part at <https://www.mkcommunityfoundation.co.uk/our-news/charity-car-draw/>

SEMK Stakeholders Meeting – 19 July (6pm to 8pm)

We are planning to hold the next meeting of the Group as per the details above. At the meeting we hope to hear from representatives of L&Q and/or O&H although final details will be provided before the date. Just to remind you that the Terms of Reference allow for replacements if you are not able to attend personally, in order that each body can be represented as fully as possible.

As agreed at the inaugural meeting an invitation is being extended to Aspley Heath to join the Group and to EWR to attend meetings.

Paul Van Geete



O & H Properties Limited submit early consultation plan for land west of Woburn Sands – see attached ... www.my.engaged.space/semk-east

Relocation of Marshall Aerospace to Cranfield Airport

On behalf of Marshall Aerospace, I would like to invite you to a preview of our upcoming public exhibition to present our latest proposals to relocate our global Aerospace headquarters and operations from Cambridge to Cranfield Airport.

This public exhibition follows an initial consultation held in March of this year where we presented our emerging plans for discussion with the community. We received a lot of valuable feedback at these events as well as requests for additional information to help understand the proposed development and Marshall's operations. In July, we will be sharing how our plans have progressed along with additional information of some of the technical aspects of the scheme to help the community understand what we are proposing.

Following this consultation, we plan to prepare a planning application, which we will submit to Central Bedfordshire Council later this year.

The public exhibitions will be on 9th and 11th July for the community to view our proposals, ask questions and share their views and, as before, we will also be making the information available online for those who cannot attend in person.

Ahead of the public exhibitions, I would like to invite you to attend a preview session with other representatives of the local community on Saturday 9th July 2022 between 10.00am and 11.00am at the Cranfield Community Centre, Thillans, Cranfield, MK43 0WP, to discuss our proposals and address any questions you might have.

I hope you are able to attend this preview briefing, however if you are unable to join us, please do feel free to come along to see us at the public exhibitions as below.

Exhibition dates

- **Saturday 9th July 2022, 11.00am – 3.00pm**
Cranfield Community Centre, Thillans, Cranfield, MK43 0WP
- **Monday 11th July 2022, 12.00pm – 5.00pm**
Cranfield Community Centre, Thillans, Cranfield, MK43 0W



PLANNING



I was informed on 8 June that it is **now intended** to take the **Swan Hill Development** application to the **4th August Planning Committee** at MKC; this is the land south of Frosts and between Frosts and the railway station. The report is in progress.

The contact is Robert Brigden
Principal Planning Officer (East Team) - Development Management
Tel: 07920 146474
Web: www.milton-keynes.gov.uk/planning
Milton Keynes Council | Civic | 1 Saxon Gate East | Milton Keynes | MK9 3EJ

As soon as I have the report I will circulate it.

Go green and reap the benefits of a grant

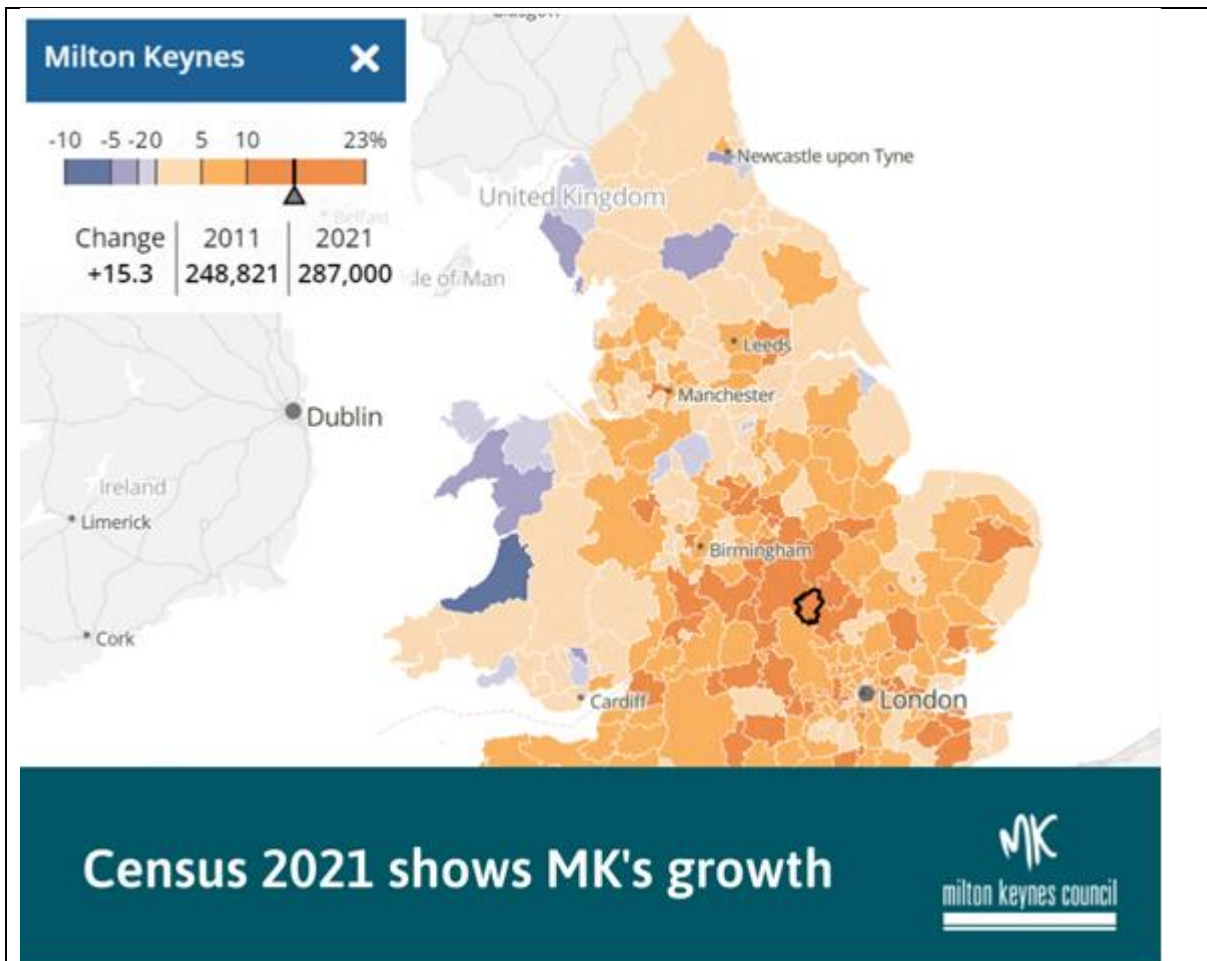


Often one of the biggest barriers to moving further forward with major energy efficiencies is the cost of technology.

Open to Milton Keynes businesses is a match-funded grant of between £1,000 - £5,000 from Low Carbon Workspaces you can recover up to a third of the cost of many different energy-saving measures, reducing the upfront cost and the time to recover your investment.

Grants are available to SMEs based in Milton Keynes. Eligible projects must result in a quantifiable reduction in greenhouse gas emissions - don't worry, the Low Carbon Workspaces team can calculate this for you!

The grant scheme aims to be as flexible as possible. If your business is looking to fund an energy-saving measure that is not mentioned below contact the team to discuss your potential project. A package of measures, perhaps due to an office refurbishment, can be supported within a single grant application.



The first set of results from Census 2021 have been released by the Office of National Statistics (ONS). The population in England and Wales has grown by 3.5m in the last ten years and in Milton Keynes it's risen by around 38,000 to 287,000. In line with the national trend towards an ageing population, 13.8% of MK residents are now 65 and over, although our population remains younger than those of most other cities. It's useful information to consider when planning services for the future. You can find all the results released so far on the ONS website. <https://www.ons.gov.uk/peoplepopulationandcommunity/populationandmigration/populationandhouseholdestimatesenglandandwales/census2021>

EWR - Connecting with communities:

EWR is restarting our face-to-face engagement with communities across the East West Rail route. The event closest to us will be in Woburn Sands on Friday 8 July, 2pm - 8pm at the Summerlin Centre, 138 Station Rd.

VEHICLE EXHAUST IS TOXIC

Please turn off your engine when stationary



Idling is a frustrating and unnecessary source of air pollution. Many parents in the MumsforLungs network have repeatedly witnessed it happening outside schools, in town centres, playgrounds and at hospitals. As well as the increase in localised air pollution, leaving an engine idling wastes fuel and money.

<https://www.mumsforlungs.org/our-campaigns/idling>

Air pollution

Local residents have forwarded a link.

And perhaps another point to make in our argument for a better local environment!

<https://addresspollution.org>



The contact at MK Council regarding the Homes for Ukraine scheme is malanie.marshman@milton-keynes.gov.uk - 01908 252842

EMA – support for new arrival and refugees

Continuing their work to help you support new arrivals and refugees in the MK community, the EMA network are offering the following online sessions that may be of use and interest to you.

- Ukraine Diaspora – 21 June (4.00pm – 5.00pm)

This session will help you to understand the needs of the newly arrived Ukrainian community in MK. It will explore challenges faced and outline support available to schools.

- Refugee and New Arrival network – 7 July (3.45pm – 5.15pm)

This is a great opportunity for schools and settings (early years, primary and secondary) who have received refugee/newly arrived children to come together and discuss strategies to support pupil integration into school life.

- Afghan Forum – 13 July (4.00pm – 5.00pm)

This session offers a chance to share and learn from good practice across MK schools, settings. It also considers other services in supporting Afghan children and families in MK schools.

All sessions will held via MS Teams. To book a place, simply email Janet Gleghorn with your details. ema@milton-keynes.gov.uk

FixMy

Report, view, or discuss local problems - (like graffiti, fly tipping, broken paving slabs, or street lighting)

Enter a nearby UK postcode, or street name and area:

<https://www.fixmystreet.com/>



The EWR Co Team

East West Railway Company Limited is a company registered in England and Wales. Registered office: One Grafton Mews, Midsummer Boulevard, Milton Keynes, MK9 1FB.

Comment from local resident

'Short trip today into the office in CMK by car from Woburn and back was hugely impacted by

1 single lanes on the A421 gridlock from Kingston to Jct 13 look like CBC works ?

2 Bottom of the A 5 from Bletcham way to Kelly's kitchen complete tail back at 3 pm it's like that every day and the other way

3 Kingston traffic lights have been badly reconfigured at the main BP roundabout long tailbacks towards Woburn Sands and on the 421 - much better flows as it was OK roadworks caused by maintenance and site devts are necessary but surely a plan for coordinated thinking to minimise disruption has been prepared and is in action - it doesn't feel like it - this is long term stuff on all major routes into CMK from the South ! And that's before MKEast and SE get going'



The UEFA Women's EURO 2022 is about to come to England.

The tournament promises to be Europe's biggest ever women's sporting event, with already a record-breaking number of tickets sold.

Four matches will be played at Stadium MK, starting with Spain v Finland on 8 July. Everyone in MK is welcome to a FREE Fan Party in Station Square happening from 12pm-5pm on Friday 8 July and Tuesday 12 July, and from 12pm-8pm on Saturday 16 July and Wednesday 27 July.

You don't have to have a ticket to one of the matches to come to the free Fan Party. There'll be:

- Live music and entertainment
- Food and drink
- Women's football exhibition
- Interactive workshops
- Face painting and table football
- Official UEFA Women's EURO 2022 partner activities including Starling Bank football-themed activities

Don't miss out on the opportunity to see Europe's best players on show and the festivities surrounding it!

Buy your tickets now: uefa.com/womenseuro/ticketing

Find out about MK's Fan Party, shuttle buses and other useful event information at <https://www.destinationmiltonkeynes.co.uk/womenseuro/>

Forthcoming Roadworks – No new reports this week

| | |
|--|--|
| | |
| | |
| | |
| | |
| | |

1. For all routine repairs and maintenance requests

Includes: street light faults, potholes, damaged signs

Email the details to customerservices@milton-keynes.gov.uk or use the Report It tab on the website www.milton-keynes.gov.uk

For safety issues e.g., traffic lights out or flooding, call 01908 252353 Mon-Fri between 9-5:15 and out of hours call 01908 226699

2. For all councillor casework enquiries

Includes: escalations about issues already reported, service delivery information and criteria, project, and scheme updates.

Email the enquiry to councillorcasework@milton-keynes.gov.uk

3. In exceptional circumstances only

For escalated enquiries without a response after the allocated timeframe (10 working days).

Please note that some enquiries require greater investigation, may be complex or require a site visit. Due to resourcing issues, we may be unable to provide a detailed response within the allotted timeframe as officers will prioritise current projects, schemes, and programmes.

Contact highways.liaison@milton-keynes.gov.uk





The Heat-Health Alert service is designed to help healthcare professionals manage through periods of extreme temperature. The service acts as an early warning system forewarning of periods of high temperatures, which may affect the health of the public.

The Heat-Health Alert service operates in England from 1 June to 15 September each year, in association with UK Health Security Agency (UKHSA). This is the period when temperature thresholds are most likely to be reached. However, should thresholds for an alert be reached outside of this period, an extraordinary Heat-Health Alert will be issued and stakeholders are advised to take the usual public health actions.

The Met Office forecasts day-time and night-time maximum temperatures, which are monitored regionally. When certain heat thresholds are passed, an alert is issued and sent to relevant health professionals and people working in social care as well as displayed on our website. This enables health professionals to take action to minimise the impact of the heat on people's health.

Sign up for alerts or contact our Health Team for more information.

<https://public.govdelivery.com/accounts/UKMETOFFICE/subscriber/new?qsp=PHE>



Stop the Arc Campaign

Rumours that it intends to ditch the Ox-Cam Arc project have been denied by the Government.

It comes after the Secretary of State said the housing figures for it were "inflated and unhelpful", and that the idea of intense development between Oxford and Cambridge is "overstated".

In answer to a question about the current state of the proposals at a meeting of the department of Levelling Up, Housing and Communities, the Secretary of State Michael Gove said: "We are talking to all the local authorities involved but I think that some of the figures that have been bandied around about housing growth related to the Ox-Cam Arc have been both inflated and unhelpful."

The controversial Arc plans aim to boost the economies of Cambridge and Oxford, and towns in between including Milton Keynes and Bedford, and help boost new firms with links to the universities.

But there has been opposition from MPs, environmentalists and people living in areas marked out for development.

The original aim of building a million new homes by 2050 has been dropped and plans for a major new road, the Expressway, linking the two cities were scrapped in 2021, but the East-West rail link is still going ahead.

The comments follow leaks and rumours that the Government has been stepping back from the scheme since Mr Gove took over as Secretary of State from Robert Jenrick in October 2021.

Earlier this year Mr Gove made a toilet flushing gesture in answer to a colleague asking him about the future of the Ox-Cam Arc.

Government officials have reportedly told local authorities that it has dropped the idea of a centrally-driven project to drive an "arc" of development.

Nick Burton, spokesman for campaigners Stop The Arc Group, said: "So there we have it. The Ox-Cam Arc is well and truly broken, and the Government is apparently going to do absolutely nothing to stop unconstrained growth of Oxford and Cambridge cities.

"This is the first official statement of the Government's position on the Arc, after many months of leaks and rumours and, even, mimes of flushing the Arc down a toilet from the Secretary of State himself.

"It's clear that the Arc proposals don't fit with levelling-up ambitions, housing policies, environmental commitments, economic reality, or public opinion. Our published survey showed 90 per cent opposition."

Mr Burton added: "The notion of one million new houses, and a band of development across five counties came from the Government's own departments and advisors, supported by the Arc Leaders Group, and housebuilders and their consultants.

"The Government is now saying its own ambitions are inflated and is walking back on its previously stated aims to build, in effect, nine major new cities between Oxford and Cambridge."

And he added: "Oxford and Cambridge are jewels in the UK's crown. They will grow. There will be some uncomfortable conversations about how that growth manifests itself but anyone who thinks that we're going to try to constrain that... I think that's wrong.

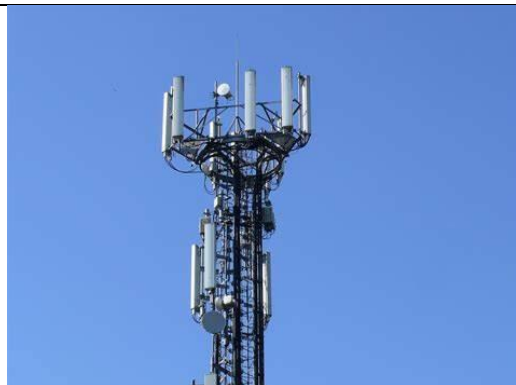
"But it is also the case that the idea that you can create a sort of a ribbon development between Oxford and Cambridge, as intense as that which has been suggested, I think that is overstated."

Support is also fading for the Arc Leaders Group (ALG), which includes representatives of the five counties impacted by the Arc proposals.

Buckinghamshire Council withdrew from the group in October 2020 and Fenlands Council have refused to join while at least two local authorities have suspended work on the project, according to campaigners.

A DLUHC spokesperson said: "The OxCam Arc is a globally renowned hub of innovation, with businesses and universities that are leading the way in life sciences, space and green technologies.

"In October last year, the Government ran a public consultation gathering views to shape the vision for this unique area. We continue to work through next steps, and will provide more information in due course."



Walton

PRE-CONSULTATION ENQUIRY IN RESPECT OF APPLICATION FOR PROPOSED 5G (FIFTH GENERATION) TELECOMMUNICATIONS EQUIPMENT:

MIK21976 - Proposed 15 m Streetworks At Britten Grove, Milton Keynes, Buckinghamshire, MK7 8PX.

On behalf of our client, GBC ('client'), who have been selected by CK Hutchison Networks (UK) Ltd to provide the resilient national telecommunications apparatus associated with 5G, Dot Surveying ('agent') is instructed to prepare and submit applications for a proposed mast and associated ancillary equipment.

This pre-consultation enquiry relates to the proposed development located at the site at At Britten Grove, Bow Brickhill, Milton Keynes, Buckinghamshire, MK7 8PX.

Following recent survey work, an option has been identified to extend connectivity at the above location, offering the potential to enable planning for 5G implementation.

The Government recognises that the widespread coverage of mobile connectivity is essential for people and businesses. As well as improved mobile signal, 5G networks are also crucial to drive productivity and growth. Enabling and planning for 5G implementation is central to achieving the Government's objective to deliver prosperity at the local level and enable places to share in the proceeds of growth.

The significant impact of the coronavirus pandemic demonstrates the urgent need for the next generation of mobile connectivity to allow people to work and learn from home.

Prior to the submission of either a full planning application or an application for prior notification of proposed development by telecommunications code systems operators, as a stakeholder, we seek and welcome your comments and views on the proposal as per the attached draft planning drawings and site detail sheet.

We look forward to receiving any comments on the preferred location identified within 14 days of this email.

If you require any further information relating to the contents of this email please make contact with Mr James Reilly by email to j.reilly@dotsurveying.co.uk or telephone 07903895601. Or planning@dotsurveying.co.uk

Simon Siddique - Dot Surveying Ltd
T: 0345 340 5456 (Option 5)



Most expensive, busiest and trendiest parts of Milton Keynes to buy a house revealed

Olney was the most expensive area of Milton Keynes to buy a house last year, according to new analysis.

Zoopla said the data highlights how localised the housing market across England and Wales is, with prices often reflecting the housing stock available in an area.

Data from the Office for National Statistics reveals that of the 19 council wards in Milton Keynes, Olney saw the highest median house price in 2021, of £382,500.

This was followed by Danesborough and Walton (£375,000) and Loughton and Shenley (£365,000).

Meanwhile, the number of homes sold in Milton Keynes rose from 3,418 in 2020 to 4,099 last year. Of sales last year, 9% (386) were in Danesborough and Walton – making it the busiest area for buyers.

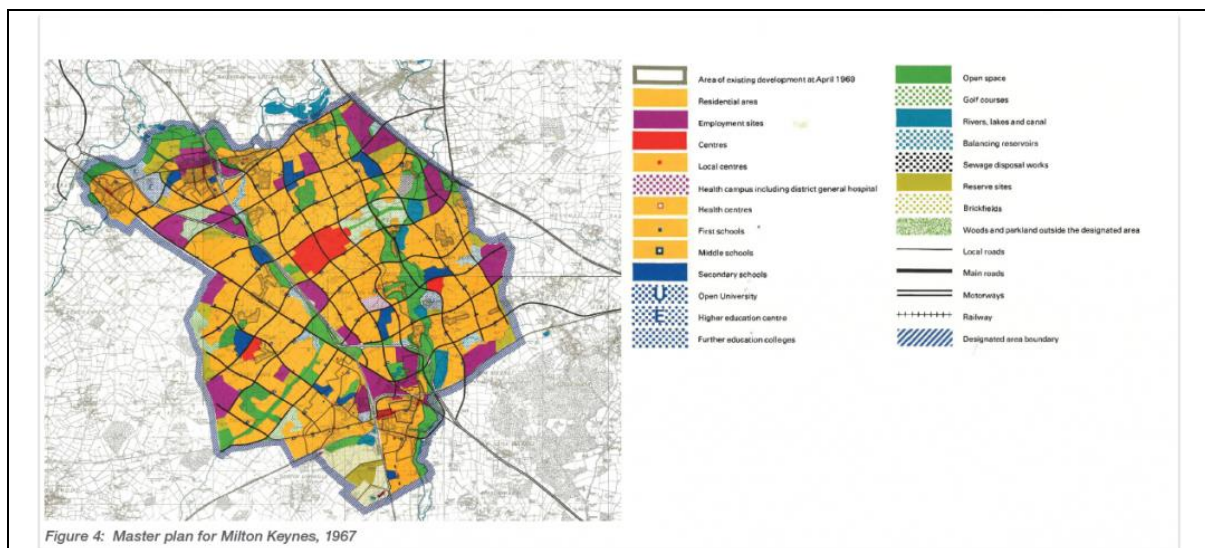
DELEGATED DECISIONS: 2022 – Decisions coming up by the Cabinet at MK Council ...

| Subject of Decision & Date of Meeting | Decision Detail | Attendees |
|---------------------------------------|-----------------|-----------|
| | | |
| | | |
| | | |
| | | |

DELEGATED DECISIONS

| Subject of Decision | | Sponsoring Officer and Report Author |
|----------------------------|---|--|
| 12 th July | Aspley Wood Access Agreement To consider approving the rights of way access agreement for Aspley Wood (semi-ancient natural woodland adjacent to Bow Brickhill and Woburn Sands). | Nick Hannon Head Environment and Waste Phil Snell Strategic Landscape and Countryside Manager Tel: 01908 253606 Cllr Townsend |
| 12 th July | Young People’s Supported Accommodation To consider commissioning supported accommodation for young people | Mick Hancock Group Head of Commissioning Peter Wong Commissioner Tel: 01908 253218 |
| 12 th July | Flood Risk Management Plans (FRMPs) for Lead Local Flood Authority (LLFA) To consider approving Flood Risk Management Plans for the highest risk flood areas in Milton Keynes. | Nick Hannon Head Environment and Waste Ashish Patel Floor and Water Management Officer Tel: 01908 252489 |
| 19 th July | Re-Procurement of the Highways, Street Lighting and Network Infrastructure Contract To consider a review and re-procurement exercise of the Highways Term Service Contract and design element of the Highways service. Delegated Decision Councillor Townsend (Cabinet member for Public Realm) | Officer Report None Stuart Proffitt Director - Environment and Property Graham Cox Interim Head of Highways Tel: 07957 699621 |
| 19 th July 2022 | Parking Surplus 2021/22 To consider how the parking income surplus generated in 2021/22 is spent. Delegated Decision | Officer Report None Stuart Proffitt Director - Environment and Property |

| | | |
|-----------------------|---|--|
| | Councillor Townsend (Cabinet member for Public Realm) | Graham Cox Interim Head of Highways Tel: 07957 699621 |
| 19 th July | Re-Procurement of the Highways, Street Lighting and Network Infrastructure Contract To consider a review and re-procurement exercise of the Highways Term Service Contract and design element of the Highways service. | Stuart Proffitt Director - Environment and Property Graham Cox Interim Head of Highways Tel: 07957 699621 |
| 19 th July | Parking Surplus 2021/22 To consider how the parking income surplus generated in 2021/22 is spent. | Stuart Proffitt Director - Environment and Property Graham Cox Interim Head of Highways Tel: 07957 699621 |



Planning - Team Manager

Team Manager

07775 110809 Chris Nash

Development Management Manager

East Team

07795 475593
07795 475584
07920 146474
07795 475586
07795 475595
07775 111052
07554 338790
07775 111178
07392 133920
01908 254773
07385 469591
07385 469645

Paul Keen
Katy Lycett
Robert Bridgen
Lakeisha Peacock
Charlotte Ashby
Tamlin Barton
Rachel Larner
Sonia James
Peter Anderson
Helen Pinder
Chloe Rawlings
Yvonne Apawu

Team Leader
Principal Planning Officer
Principal Planning Officer
Senior Planning Officer
Senior Planning Officer
Planning Officer
Planning Officer
Planning Officer
Planning Officer
Development Services Officer
Development Services Officer
Development Services Officer

West Team

| | | |
|--------------|--------------------|------------------------------|
| 07384 241816 | Elizabeth Verdegem | Team Leader |
| 07909 681807 | Sarah Willetts | Principal Planning Officer |
| 07880 398388 | Gavin Forrest | Senior Planning Officer |
| 07795 475588 | Ida Gahnstroem | Senior Planning Officer |
| 07552 765580 | Lucy Baxter | Planning Officer |
| 07552 754817 | Emily Kingswell | Planning Officer |
| 07384 241817 | Lauren Hitchings | Planning Officer |
| 07867 894620 | Kayleigh Boulding | Development Services Officer |
| 07775 111209 | Paul Kitchener | Development Services Officer |

Enforcement Team

| | | |
|--------------|------------------|------------------------------|
| 07795 475597 | Victoria Barrett | Team Leader |
| 07795 475589 | Zehn Sajid | Enforcement Officer |
| 07775 110877 | Tom Halsey | Enforcement Officer |
| 07922 076685 | Angela May | Development Services Officer |

Did you know that you can now search for planning applications specifically in your parish or ward on the weekly list?

The Public Access for Planning website allows you to filter your search by a parish or ward. The list is interactive allowing you to access the details and documents relating to applications on the list by clicking on them.

| Planning applications | Weekly list 1 June 2022 |
|--|---|
| Planning Buddy! Rachel Larner Planning Officer rachel.larner@milton-keynes.gov.uk 07554 338790 | <ul style="list-style-type: none"> • Bow Brickhill Parish Council • Little Brickhill Parish Council |
| Planning Buddy! Sonia James Planning Officer sonia.james@milton-keynes.gov.uk 07775 111178 | <ul style="list-style-type: none"> • Walton Community Council |
| Planning Buddy! Senior Planning Officer charlotte.ashby@milton-keynes.gov.uk 07795 475595 | <ul style="list-style-type: none"> • Wavendon Parish Council |
| Planning Buddy Katy Lycett | <ul style="list-style-type: none"> • Woburn Sands Town Council |

| | |
|---|--|
| <p>Principal Planning Officer katy.lycett@milton-keynes.gov.uk 07795 475584</p> | |
| | |
| Planning Applications | |
| | |
| <p>Town and Country Planning Act 1990 (As Amended) Town and Country Planning (Development Management Procedure) Order 2015 Application no: 22/01624/HOU Proposal: Erection of a double storey side extension. At: 1 Mendelssohn Grove Browns Wood Milton Keynes MK7 8DH</p> | <ul style="list-style-type: none"> • Walton |
| <p>Town and Country Planning Act 1990 (As Amended) Town and Country Planning (Development Management Procedure) Order 2015 Application no: 22/01499/PRIOR Proposal: Prior Approval of 5G telecoms installation consisting of a 15m High street pole and 3 additional ancillary equipment cabinets and associated ancillary works. At: Land At Britten Grove Old Farm Park Milton Keynes</p> | <ul style="list-style-type: none"> • Walton |
| <p>Town and Country Planning Act 1990 (As Amended) Town and Country Planning (Development Management Procedure) Order 2015 Application no: 22/01581/ADV Proposal: Advertisement consent for the display of internally illuminated fascia signage, pole signs, lightbox and menu units, and non-illuminated directional ground signs and information signs At: Land At Elmswell Gate Glebe Farm Milton Keynes</p> | <ul style="list-style-type: none"> • Wavendon |
| <p>Town and Country Planning Act 1990 (As Amended) Town and Country Planning (Development Management Procedure) (England) Order 2015 Application no: 22/00385/REM Proposal: Application for approval of reserved matters (appearance and landscaping) pursuant to outline planning permission 20/02188/OUT for the demolition of existing storage shed and the erection of a 96 bedroom care home with parking and associated development. At: Woburn Sands Emporium Newport Road Wavendon Milton Keynes MK17 8UF</p> | <ul style="list-style-type: none"> • Wavendon |
| <p>Town and Country Planning Act 1990 (As Amended) Town and Country Planning (Development Management Procedure) Order 2015 Application no: 22/01597/HOU Proposal: Erection of a two storey rear extension, infill of carport and first floor side dormer and balcony At: 2 Longacre Wavendon Milton Keynes MK17 8YZ</p> | <ul style="list-style-type: none"> • Wavendon |
| | |



Where and when to put your bins out

- Place waste and recycling on the boundary of your property closest to where the collection vehicle passes by 7am on your collection day. Don't put out your recycling earlier than 5pm the day before your collection day.
- Don't pile up your bags with the neighbours in your street.
- Tie up all rubbish and recycling bags.
- Rinse out any food and drink containers before you put them into the clear sacks.
- Breakdown cardboard and place it inside the clear recycling sack. If it is too big please take to your local Household Waste Recycling Centre.
- Don't put loose items, e.g. large cardboard boxes out with your recycling; it won't be collected.
- If your recycling bags, box or wheeled bin contain the wrong items it may not be collected or emptied.

If you think your rubbish has been missed by Serco please use the councils missed bin reporting form. <https://www.milton-keynes.gov.uk/waste-recycling/report-or-request-it/report-a-missed-collection>

<https://www.milton-keynes.gov.uk/waste-recycling>



Locally - PC Rob Childs – 07974 970568 or robin.childs@thamesvalley.pnn.polic.uk -----

On Friday 1 July, the Police and Crime Commissioner launched Operation Deter – a new operation by Thames Valley Police aimed at zero tolerance to knife carrying in the Thames Valley. This note is from ...



Matthew Barber

Police & Crime Commissioner
for Thames Valley

Attached is a briefing note on Op Deter explaining in a bit more detail what I hope to achieve and how.

Much of the early work is focussed around Milton Keynes, but it is intended that this approach will be spread across the whole of Thames Valley. Over the course of the coming months there will be an ongoing campaign to address the culture of knife carrying, particularly amongst young people.

The objective of Operation Deter is to make better use of charging and remanding offenders to court to ensure that the right message is sent to those found in possession of a knife.

The unlawful possession of a knife is covered by Section 139 of the Criminal Justice Act (1988), which is the offence of having an article with a blade or point in a public place.

This is an 'either way' offence which carries a maximum sentence of six months' imprisonment or a fine in the Magistrates' Court, or up to four years' imprisonment in the Crown Court.

It is intended that TVP adopt a zero tolerance approach to knife possession offences in Milton Keynes for offenders aged over 18, with the objective being that any knife possession offences are proactively charged and remanded to court by TVP while the suspect is still in custody. Following the charge, the custody sergeant will then take a more robust approach to bail. In addition I am providing significant funding to the Milton Keynes Youth Offending Team to pilot a rapid response approach to youth diversion, with an initial meeting with a child taking place within 90 minutes of them being brought into custody.

This will set a clear message to those routinely carrying a knife in Milton Keynes, that this will not be tolerated and will make the city and indeed the whole of Thames Valley a hostile environment for this high risk offending.



Community Speedwatch scheme

The Community Speedwatch scheme is set to provide communities with equipment and training to monitor speeding in their area.

Thanks to a new partnership with Community Speedwatch UK, a not-for-profit social enterprise that provides support for speedwatch schemes, Thames Valley have taken a major step forward in the fight to improve road safety.

Organised by the Office of the Police & Crime Commissioner, speedwatch groups will be provided with a starter kit on a loan basis, including a speed detection device, to help volunteers to assist in the battle against speeding motorists.

Before community teams can be deployed to the roadside, they will undergo a number of training sessions online. Risk assessments will be completed by police to ensure safety at the roadside.

The new online platform allows group-related activities to be self-regulated via an online calendar and also provides vehicle make recognition training. DVLA pre-checks logged registration numbers for authenticity before automatically passing data on to the police for further processing. Existing Community Speedwatch groups will be contact directly about restarting activity once coronavirus restrictions allow.

A six-month trial will take place in pre-selected locations in order to test the new online platform and get feedback from volunteers. If successful the new scheme, including the loan of equipment will be rolled out to new and existing groups towards the end of 2021.

Latest news

- Restart and relaunch for Community Speedwatch in 2021
- Launch of Community Speedwatch scheme across Thames Valley

Further information

For more information, if required, please email lee.turnham@thamesvalley.pnn.police.uk.

Further information on Community Speedwatch Online can be found at:
<https://communityspeedwatch.org/FRONT-v2-Home.php>.



The 12 Local Police areas of Thames valley Police are now on the new platform, the final area of Milton Keynes went live on 29th December 2021.

The PCC, Matt Barber has secured funding, enabling short-term loan start-up kits for new areas that are waiting for funds being available to purchase equipment. These will be available, on a loan period of up to 6 months only, once loaned you cannot request to loan again. This will enable other teams starting up in the TVP area to get started as soon as possible. These devices will be available as soon as they arrive from the suppliers

PLANNING



Central Bedfordshire planning dept. ref CB/21/05366/OUT

Outline Application: Erection of up to 69 dwellings at Strawberry farm.

Lower End Wavendon – Residents Concerns regarding planning application in CBC area

Their concerns are:

In the parking stress survey para 1.5. The area where the assessment was carried out represents a small length of the road between the railway station and Aspley Guise Square. I travel along this road and the main concentration of parked traffic is from St Botolph's church to Aspley Guise Square. This occurs at any time of the day or night due to events at the church and customers for the various eateries in the Square.

Because of the parked traffic density, this often means travelling on the wrong side of the road while approaching blind corners. Increased traffic for the proposed development will make this even more dangerous.

In the Transport Assessment document most of the research has been done on the eastern part of Salford road, towards Aspley Guise, not on the western section towards Milton Keynes, where the majority of traffic will be travelling.

As has been said in previous objections.

We are concerned that the majority of traffic generated by the proposed development will be travelling west towards Milton Keynes for work, shopping, mainline railway station and bus station, as there is little reason to travel to Aspley Guise i.e. two buses in and out of the village per weekday and up to twelve trains in either direction and no shops. So MK will be the favoured destination by car, cycle or foot. Public transport for Aspley Guise is very limited approx. 4 buses per weekday and few trains, with even fewer stopping when the East West link is established

The western section of this road is narrow with crumbling roadside verges, making it very narrow in places and unsafe for cyclists. There is no footpath and (in some places) a very small verge between the road and ditch, so there is nowhere for pedestrians to get off the road and out of the way of traffic. There are also a number of blind bends.

In the Highway Improvements 170383 GA03 - 03.12.2021 document, the few road improvements do little to improve the overall safety of a narrow country lane with a surface and substrate that is failing even with the relatively low usage it gets. Also, there is no foot path or cycle way, which will discourage people using greener and environmental sustainable transport because of the danger of the narrow, broken surfaced road.

The exit from Crabtree Lane onto the Cranfield Road in Lower End is on a blind bend, in both directions.

Although the revised Transport Assessment does now cover this junction, the provision of Halt signs will in no way improve the safety at this junction. All the traffic using Crabtree Lane and approaching this junction comes to a complete halt anyway. It would risk a crash to do otherwise.

The change of speed limit to 30 mph on all roads in the area would again make little difference, as all traffic slows on the approach to the blind bend but the vision from the Salford side is such that a vehicle coming from Salford would still not have the required 25m stopping distance if a vehicle pulled out of Crabtree Lane.

We live on the corner of this junction and although there may not be many reported accidents, we have witnessed some accidents where no-one was hurt and often hear sounds of near misses.

This road is unsuitable for an increase in construction traffic, delivery vans, cars, cyclists and pedestrians.

The increased traffic going east will have to exit Salford Road into Aspley Guise Square, which is also a dangerous congested junction, particularly if going in the Bedford direction.

I think the proposed development should have its own access road from Salford Road, across the field to Cranfield Road, perhaps forming a T-junction with Lower End Road.

For these reasons and those in the CPRE document we think the development should be refused.

Anglian Water – Drainage & Water Management Plan



The Anglian Water Draft Drainage Management Plan (DWMP) is open for consultation until 16 September 2022. The DWMP is a long-term strategic plan highlighting known and expected future risks to drainage and which also identifies solution strategies to mitigate. The plan and supporting information, including how/ where to respond is available here.

<https://www.anglianwater.co.uk/about-us/our-strategies-and-plans/drainage-wastewater-management-plan>

There will be live Q&A consultation sessions at the following dates and times:

11 July 2022 at 10 am

15 August 2022 at 10 am
8 September 2022 at 11 am

You can register your interest to attend one of these sessions here

https://forms.office.com/pages/responsepage.aspx?id=Ah26561q1UiBhePca_e4bdawyaxhwD1HvonCUGnt_pUOFhVUFdWQk0yVTJIQkNNWkhWMDJIOEU3OC4u&web=1&wdLOR=cCB42D997-1FE8-4970-999F-58475803AFF0

Cllr David Hopkins – July 2022