

Danesborough Snippets for Little Brickhill in December 2022

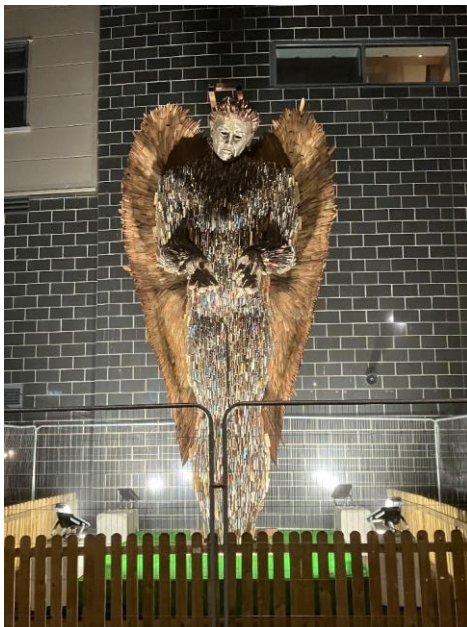
Cllr David Hopkins / Cllr Victoria Hopkins / Cllr Alice Jenkins

Special bulletin



The month of action against violence in December was marked on Friday (02/12) at Stadium MK with the arrival of the National Monument Against Violence and Aggression.

The monument, also known as the Knife Angel, arrived in the city on Friday 2 December and will be located outside Stadium MK throughout December and into early January.





Marston Vale Line

trains suspended after firm goes into administration

'I am writing to make you aware that train services between Bedford and Bletchley on the Marston Vale Line will be temporarily suspended from Friday 2 Dec 2022. The suspension follows confirmation today (Thu 1 Dec) that Vivarail, the company which maintains the Class 230 trains on the route, has entered administration. Without the guarantee of effective maintenance cover for the fleet we have been left with no option but to temporarily suspend the service while a solution is found.

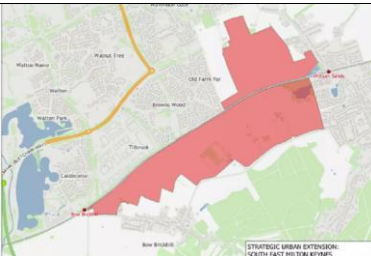
I recognise this is extremely disappointing news, particularly at a time when we were looking forward to introducing a robust hourly timetable onto the route in coming weeks. Rail replacement buses will be in operation from tomorrow until further notice. Bus times will be made available in online journey planners from Saturday. For bus services, times are available at www.lnr.uk/times

At this stage I am not able to provide a date when we anticipate a train service will be able to return to the line, but please rest assured we are working hard to find a solution. As soon as I have any further updates on this situation I will let you know.

If you have any questions, please do not hesitate to contact me.'

Best wishes

Vicky Cropper-Clarke
Head of Stakeholder and Community, London Northwestern Railway
07976 989020



SEMK Stakeholder Meeting

Representatives of the Danesborough PC's attended the meeting of the SEMK Stakeholder Group on 28 November in Bow Brickhill. The meeting was also attended by a raft of developers and associated consultants – they obviously subscribed to the theory of safety in numbers!

- The meeting was civilised and surprisingly useful (in my view) – we had presentations from L&Q and O&H followed by discussion. Subject to comments from David and Peter I think we managed to get across our key points which were received politely (but time will tell how much was accepted).
- The key points which came out were as follows:
 - The developers are all talking to each other and a coordinated approach is starting to appear particularly in terms of the physical layout.
 - Cala Homes, whose site “eats into” the L&Q site, are now working with L&Q. The addition of their site will increase the number of dwellings in the L&Q application.
 - There are four small independent plots of land around Woodleys farm still not included – Cala Homes are in discussion with the owners.
 - L&Q have re-designed their site to comply with the SPD (eg location of schools)
 - L&Q plan to re-submit their application after Christmas
 - There remains one major problem – the developers have not coordinated the number of dwellings which each one will provide; their current proposals therefore total in excess of 3,000. It has been agreed that they will work together to produce a coherent plan showing the distribution of housing (including Swan Hill). They seem to believe that the 3,000 is merely an irrelevant target! I have therefore included relevant comments in the draft response to O&H (paras 7-9)
 - EWR remains a total unknown.
 - O&H do not seem to understand the meaning of the expression “West to East” and I have strengthened the references to this in our response (para 4).
 - It was agreed that the problem of the design of the Woodleys Road connection with Bow Brickhill Road needs further detailed discussion.
- The next meeting of the Group is likely to be in February when final plans from both L&Q and O&H will be available.



Reminder - Parliamentary Boundary Consultation

A reminder that the final consultation phase for the review of parliamentary boundaries closes at midnight on Monday 5 December. Amended draft proposals for the South East are available here. <https://boundarycommissionforengland.independent.gov.uk/2023-review/south-east/>

At the Full Council meeting on 23 November a motion to make representations to the Boundary Commission for England, on the names of new Milton Keynes constituencies was unanimously agreed. You can view the submission made on behalf of the Council is summarised as;

All Political Groups on Milton Keynes City Council support the proposed name for the new Milton Keynes North constituency, but also feel that it would be more appropriate that:

- the proposed name of Milton Keynes South, should be amended to Milton Keynes Central; and
- the proposed name of Buckingham and Bletchley, should be amended to Milton Keynes South and Buckingham.



Cost of doing Business – Support

Price rises are affecting businesses across the country!

SEMLEP are offering a wide range of resources and programmes to help you protect your business.

These fall under three broad categories:

- Boosting business resilience and maintaining growth.
- Reducing costs by increasing the efficiency and sustainability of your business.
- Helping you maintain the mental and physical wellbeing of yourself and your staff members.

Click here to see what support is available in Milton Keynes for your business

<https://www.semlepgrowthhub.com/milton-keynes-cost-of-living-support/>



Article from the Guardian ...

A legal challenge has been launched against a road scheme that opponents say clashes with climate goals.

Changes aimed at improving car journeys between Milton Keynes and Cambridge by upgrading junctions and building a 10-mile dual carriageway on the A428 between Black Cat and Caxton Gibbet were approved in the summer. The scheme, estimated to cost £810m-£950m, is listed in the government's growth plan for accelerated delivery.

But Transport Action Network (TAN) filed for judicial review at the end of September, arguing the Department for Transport (DfT) was wrong to only assess emissions from the scheme against the national carbon budget.

Instead, the climate campaign group points to professional guidance from the Institute of Environmental Management and Assessment, which recommends using sectoral, regional and local carbon budgets to contextualise a project's greenhouse gas emissions.

Regional targets set by England's Economic Heartland, a subnational transport body, are to reach net zero by 2040 and achieve a 5% cut in car traffic by 2030. These are tighter than any national ambition.

"If you look at local carbon budgets, very often you see the increases caused by the roads consumes quite a substantial proportion," said TAN's founder, Chris Todd. "And that shows that these roads are not sustainable."

National Highways' figures submitted during examination of the A428 scheme show it would generate 3.5m tonnes of extra carbon emissions during construction and from the extra traffic. That makes it the third most polluting of the 50 planned road schemes.

TAN is also challenging the broader need for the project. Todd said it was "madness" to be investing in roads that increase traffic in a climate emergency. "What we are trying to get the government to accept by challenging these sorts of schemes is that you can't just keep deferring making the changes to a future date. In an emergency, you have got to tackle things now."



Wavendon need your help to shape a dynamic new public art project for the large new Parish of Wavendon.

If you are Wavendon based, this is a great opportunity for you to help shape a dynamic new public art project for Wavendon that will encourage visitors and help boost the local area.



Reverse Advent to support MK Foodbank

The MK Foodbank has relaunched its popular Reverse Advent campaign where you fill a box with long life food items throughout November and deliver it to the Foodbank in Kiln Farm before 2 December so they can share it with people in need in time for Christmas. If you'd like to take part, their preferred shopping list is above and there's more details on their website. As you may be aware, MKC Council is contributing an extra £80,000 to the Foodbank this winter so they can create 88 new top up shops and help even more families.

<https://mkfoodbank.org.uk/latest-appeal/>

Attached is the bus route map as the network will look with Arriva's changes. The link through Caldecotte will start as soon as the Brickhill Road closure is removed (on December 4th).

Contact: Anthony Kent - Passenger Transport Officer

M: 07468702256

E: anthony.kent@milton-keynes.gov.uk for details



E-scooter trials in Milton Keynes are set to be extended for another 16 months with around 1.6m journeys already completed in the city.

The scooters have proved popular in MK and have replaced an estimated 390,000 car journeys, saving 128 tonnes of carbon.

The trials are led by Central Government and were initially planned to last 12 months. However, Government is seeking more time to consider national policy which means local authorities have the option to permit an extension of local trials. In Milton Keynes, trials are proposed to be extended until May 2024. The City Council will make a decision on this next week.

A working group involving the City Council and partners will continue to look at local considerations and concerns about the use of e-scooters. The group provides regular feedback to e-scooter operators on issues including rider behaviour and parking.



Red Bull

After winning two titles and the largest haul of points ever scored in a single season, Milton Keynes's own Oracle Red Bull Racing team has announced a 'Milton Keynes Homerun' to celebrate.

On Saturday 10 December, drivers Max Verstappen and Sergio Pérez will be joined by fan favourites and professional stunt drivers to put the team's high-performance cars through their paces in Central Milton Keynes.

Join in and celebrate this momentous occasion.

Visit their event page for more information. <https://www.redbullracing.com/int-en/events/milton-keynes-homerun/>

For any questions and clarifications, please send an email to: Home.Run@redbullracing.com

Attracting New Councillors

NALC (National Association of Local Councils) have some good comms stories here ELECTIONS (www.nalc.gov.uk). Contained within the link are some 'recruitment' resources that may help. There are also a number of videos made by P&T Councillors that come under the

#MakeAChange banner, that can be shared. Example at link here #MakeAChange | Cllr Farzana Kharawala - YouTube

Would you like me to do a 'round robin' email to all parishes asking them what they have done (and any publicity that they could share), to attract councillors in recent years? I can ask them to reply to Heather and she can collate, or I can ask them to send any info to you / WSTC direct?

Am sure it wouldn't be a problem using the promotion of being a parish councillor in a Town Council that falls within the area of the City of Milton Keynes!

Kay Pettit - Programme Manager – Parish and Town Councils

To speak with me: use Microsoft Teams or 07971 102 278
Milton Keynes City Council | Civic , 1 Saxon Gate East | Milton Keynes | MK9 3EJ
www.milton-keynes.gov.uk



Contact Points

Kingston Roundabout Traffic Lights

Contact point at MK Council when lights go out of sequence.

Jonjo McBride jonjo.mcbride@milton-keynes.gov.uk



...and for landscape issues ...

Phillip Snell Phillip.Snell@milton-keynes.gov.uk

Strategic Landscape and Countryside Manager
To speak with me: use Microsoft Teams or 01908 253606

Milton Keynes Council | Milton Keynes Waste Recovery Park, 9 Dickens Road | Milton Keynes | MK12 5QF

www.milton-keynes.gov.uk

and for waste collection and upcoming changes to bin collections ...



Penny Fletcher Penny.Fletcher@milton-keynes.gov.uk

Community Engagement Manager

To speak with me: use Microsoft Teams or 07717 156040

Milton Keynes Council | Milton Keynes Waste Recovery Park, 9 Dickens Road | Milton Keynes | MK12 5QF



Six new City Council-funded 'Homework Plus'

clubs have opened in Milton Keynes, taking the total to eight.

At the clubs, school pupils get support with their homework, including internet access, and a substantial meal.

Milton Keynes City Council launched the scheme earlier this year to help local organisations run after-school clubs for children and young people. Club organisers can apply for a one-off grant of £1,000 to assist with the costs of setting up a club.

Following demand, the City Council has extended the window for local organisations to come forward. Interested organisations need to fill out the simple form (which includes full conditions) and send it to HAF@milton-keynes.gov.uk before Friday 15 December 2022.

Clubs must provide regular sessions of at least 90 minutes, be available to all children and young people, and be free or low cost to access.

Last year, the City Council's Poverty Commission found almost 23,000 children were living in poverty in Milton Keynes. The Homework Plus scheme is one of many of its initiatives designed to help families following a national rise in the cost of living. A recently announced Winter Plan includes a £3.3m package of support for residents made of City Council funds and Government grants.

To learn more, including advice and links to ongoing and emergency funds, please visit www.milton-keynes.gov.uk/cost-living-support .

A list of all existing Homework Plus clubs and how to make contact can be found below. To find out more about Homework Plus clubs, visit: www.milton-keynes.gov.uk/HAF.



If you are aware of someone who would like to apply to join the MKC Housing Register please use the following link to access the on-line application form:

<https://myhousing.milton-keynes.gov.uk>

Housing Allocations Team - T: 01908 252937 Option 4
E: housing.allocations@milton-keynes.gov.uk



Councillors and colleagues across MK City Council support White Ribbon UK

Milton Keynes City Council's stand to end all men's violence against women has led to it becoming White Ribbon Accredited ahead of White Ribbon Day this Friday (25 November).

At a ceremony last night, the City Council renewed its cross-party support for White Ribbon, a global campaign that encourages people, especially men and boys, to challenge behaviour and change the culture that leads to abuse and violence against women.

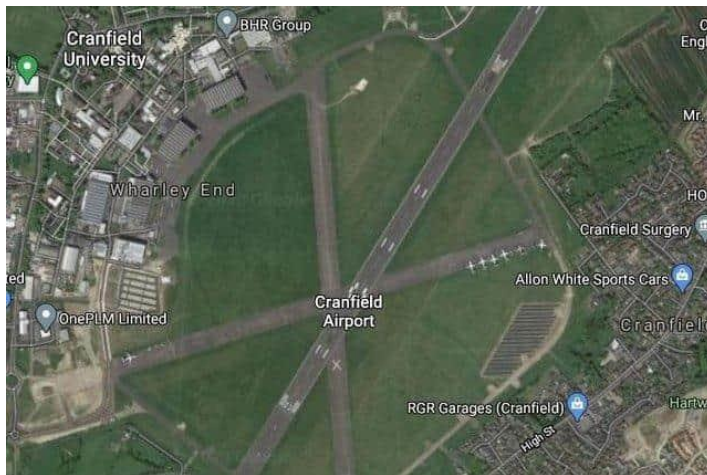


A White Ribbon action plan produced by the City Council includes updates to its workplace domestic and sexual abuse policies, guidance and training for colleagues, housing and support services for women and children who need to flee violence and abuse and a range of measures to improve safety on the streets and in schools for local women and girls.

The City Council is also establishing a network of male 'ambassadors' and female 'champions' among its officers and councillors, to promote the message and raise awareness of the issues.

On White Ribbon Day itself, the City Council's Youth Cabinet (YCAB) will share a poem to advocate their support of the campaign during a candlelit vigil in Campbell Park. Following this, events will take place across the city during '16 days of action'.

Marshall is bringing forward proposals to relocate its global Aerospace headquarters and operations to Cranfield Airport.



<https://marshallaerospace.com/relocation> for the latest news

Marshall Aerospace has submitted its outline planning application paving the way for its relocation to Cranfield.

The application to Central Bedfordshire Council follows a public consultation with residents.

Marshall hopes to build a new purpose-built facility on the Cranfield University Campus.

Kathy Jenkins, Marshall chief executive officer, said: "We are pleased to have reached this important milestone in our aerospace relocation programme.

"We have been delighted with the response we have had thus far to our proposals to move our aerospace business to Cranfield with the vast majority of people welcoming the employment opportunities and economic benefits we will bring to the area.

"In parallel with the planning process we are continuing to develop our relationship with Cranfield University and are already collaborating on a range of projects, particularly in the areas of research and skills development, that will underpin our long-term strategic partnership and bring further value to the local economy,"

Cllr Richard Wenham, leader of Central Bedfordshire Council, said: "Marshall Aerospace is a major player in its field so their plans to move operations to Cranfield Airport would be a significant boost for Central Bedfordshire.

"This is evidence of the extensive work we do to showcase our area as an attractive business location and has the potential to provide exceptional new opportunities for local people to find rewarding, highly skilled work close to home."

Subject to planning approval, Marshall Aerospace intends to be operational at Cranfield during 2026 and to have vacated its current home at Cambridge Airport by 2027.



Milton Keynes City Council is marking Fuel Poverty Awareness Day (December) by encouraging struggling households to apply for free energy efficiency improvements worth up to £25,000.

Eligible households have until 31 December 2022 to apply for funding to make free energy efficiency upgrades to their homes, after the City Council successfully bid for a major government grant to promote the national Sustainable Warmth Programme.

Free improvements that may be covered by the funding include:

- insulation to keep homes warm and help cut energy bills;
- new low-carbon heating systems with an air-source heat pump;
- heating controls or energy efficient hot water solutions;
- photovoltaic solar panels to generate free electricity;
- energy efficient lighting, which is cheaper to run.

Across MK, households could be eligible if they have an annual income of less than £30,000 and are living in a home with low energy efficiency (determined by the energy performance rating). The City Council is particularly keen to hear from households heated by alternative fuels such as oil heating or only electric heaters.

To find out more or apply, visit www.miltonkeynes-applications.co.uk or call City Energy on 02921 68095.

MK City Council declared a 'cost-of-living emergency' last month and has allocated more than £18m in support for struggling residents. Its Winter Plan includes extra funding for local initiatives that provide food and domestic essentials along with projects that can offset or reduce energy

bills. As part of this, the City Council is funding a free helpline offering advice to residents on how to get support with energy costs.



A programme of FREE activity sessions will provide extra support to families in Milton Keynes during the Christmas school holidays. The activity sessions are exclusively available to children, young people, and their families in receipt of benefit related Free School Meals.

Between 19 – 22 December, a huge range of indoor and outside activities have been organised including arts and crafts, crazy golf, film-making and multi-sports clubs. The winter activity programme, developed and funded by Milton Keynes City Council, is available to view online.

More than 7,000 individual play sessions will be running across MK in the week before Christmas. Eligible families simply need to browse the online programme and contact providers directly to make a booking. Most of the activities take place within 4-hour sessions and include nutritious, healthy meals unless stated on the programme. Most providers will be able to cater their events for attendees with special educational needs or disabilities.

Milton Keynes City Council is working with 21 local clubs, schools, charities and organisations to provide the activities as well as holding events in its own Children and Family Centres and Music Hub.

The programme builds on the hugely successful Summer of Play where local families took part in 26,000 fully funded activity sessions during August with each including a free healthy meal and snack.

The City Council has previously declared a 'cost-of-living emergency' and published a Winter Plan at the start of November with extra funding for local projects that provide food or domestic essentials or that can offset or reduce energy bills.

To learn more about the Winter Holiday Activities and Food programme in Milton Keynes visit www.milton-keynes.gov.uk/haf and download the full activity programme.

FixMy

Report, view, or discuss local problems - (like graffiti, fly tipping, broken paving slabs, or street lighting)

Enter a nearby UK postcode, or street name and area:

<https://www.fixmystreet.com/>



The latest ‘Stakeholder’ meeting took place at 7:00 - 9:00 pm on Thursday 17 November. The meeting was held virtually via Zoom. Copies of slides etc circulated.

‘The Government’s commitment to EWR, confirmed by the Chancellor in the autumn statement, reflects how important this project is for both economic growth and the quality of life in this area. That’s why 71 per cent of local residents support a new transport link between Oxford and Cambridge, and why local authorities and businesses have been so vocal in their backing for the project.

Following the Chancellor’s commitment, we are now able to move forward with our plans to deliver a faster, more sustainable and affordable way to travel that links people to their jobs, families and friends.

In the coming weeks and months, we will be reaching out locally to ensure that as the project progresses, we are working closely together to deliver a railway service that meets local needs and improves daily lives.”



Contract Decision 6 December

As part of the Environmental Services Commissioning 2023 Programme to review and align the approach to front line services, a major procurement exercise has been undertaken to integrate waste collection, street cleansing, landscape maintenance and play area inspections and maintenance services.

The new contract will provide a one city approach through integration of the services, a new wheelie bin service, co-location of depots and the energy generation and recovery from MK Waste Recovery Park (MKWRP) will electrify the council owned fleet.

The procurement has followed a rigorous competitive dialogue process to get the best service outcomes for the residents of Milton Keynes. The process has drawn on expertise both from within the council and external advisors. This has included officers from technical, financial, legal, procurement, customer services, human resources, health and safety, emergency planning and IT (over 30 officers and more have been involved in preparing the specification for other council services from housing, highways, bereavement services, transport, parishes), with specialist external technical, programme management, commercial, financial structuring, fleet and legal experts (over 20 people) over the last 18-months from the commissioning executive decision.

The service commencement date under the new contract will be 4 September 2023 for a five plus five-year contract.

Current Contracts and the New Contract

There are currently three contracts which will expire on 3 September 2023:

- Waste Collection and Cleansing (commenced on 2 March 2009);
- Landscape Maintenance and Associated Services (commenced on 3 November 2014); and
- Play Area Inspections and Maintenance (commenced on 1 July 2016).

Two Delegated Decisions on 20 July 2021 and 31 August 2021 approved the recommendation to go out to tender for an integrated Waste and Environmental Services contract.

There are many benefits of an integrated service between waste collection, street cleansing, landscape and play areas including:

- security of staff with Real Living Wage;
- opportunities for workforce;
- ability to upscale and skill up workforce in accelerated timescale;
- redeployment;
- street scene integrated services - integration of street cleaning,

landscape, and fix-it maintenance services;

- dedicated street-scene resource focussed on estate renewal and improvement; programme of 'delighter' projects in addition to getting the basics right - renovation and renewal;
- shared depots;
- shared equipment and vehicles;
- Council City wide team - one branding;
- improved performance mechanisms;
- joined up transparent customer response and easier access and clarity for residents; and
- reduced costs with shared corporate services for HR and health and safety.

The integrated contract will be based on a five-year contract with an option to extend for a further five years.

Forthcoming Roadworks – No new reports this week for MK but one from Anglian Water

Litchfield Down Walnut Tree	30th November 2022 12:30pm 4:30pm https://one.network/?tm=GB131912366
Fyfield Barrow Wavendon Gate	2nd December 2022 9:30am 4:30pm https://one.network/?tm=GB131912650

1. For all routine repairs and maintenance requests

Includes: street light faults, potholes, damaged signs

Email the details to customerservices@milton-keynes.gov.uk or use the Report It tab on the website www.milton-keynes.gov.uk

For safety issues e.g., traffic lights out or flooding, call 01908 252353 Mon-Fri between 9-5:15 and out of hours call 01908 226699



All planned roadworks for MK are listed on one.network <https://one.network/>

In advance of works taking place, there should be notices to advise local residents and other road users or any closures and the dates and times. For some types of work, like resurfacing, lining or gully cleaning please do not park your vehicle in the work area.

More information for residents can be found on our Important Information for Residents Factsheet <https://www.milton-keynes.gov.uk/sites/default/files/2022-09/Important%20information%20for%20residents.pdf>

For all routine repairs and maintenance requests

Includes: street light faults, potholes, damaged signs

Email the details to customerservices@milton-keynes.gov.uk or use the Report It tab on the website www.milton-keynes.gov.uk

For safety issues e.g., traffic lights out or flooding, call 01908 252353 Mon-Fri between 9-5:15 and out of hours call 01908 226699

DELEGATED DECISIONS: 2022 – Decisions coming up by the Cabinet at MK Council ...

Subject of Decision & Date of Meeting	Decision Detail	Attendees
Cabinet 6 December	CANCELLED	

DELEGATED DECISIONS

Subject of Decision		Sponsoring Officer and Report Author
6 December	New Waste and Environmental Services Contract 2023 Councillor Trendall(Cabinet member for Customer Services) Stuart Proffitt Director (Environment & Property) & Nick Hannon (Head of Environment and Waste)	To consider awarding the new waste collection service, street cleansing, landscape maintenance and play area contract to commence in September 2023.
	Extension of Car Cruise Public Space Protection Order (PSPO) Councillor Wilson-Marklew (Cabinet member for Climate and Sustainability) plus Sarah Gonsalves Director - Customer and Community Services & Mel Marshman Head of Partnership and Resilience Tel: 01908 252842	To consider extending the existing Car Cruise PSPO for an additional three Years

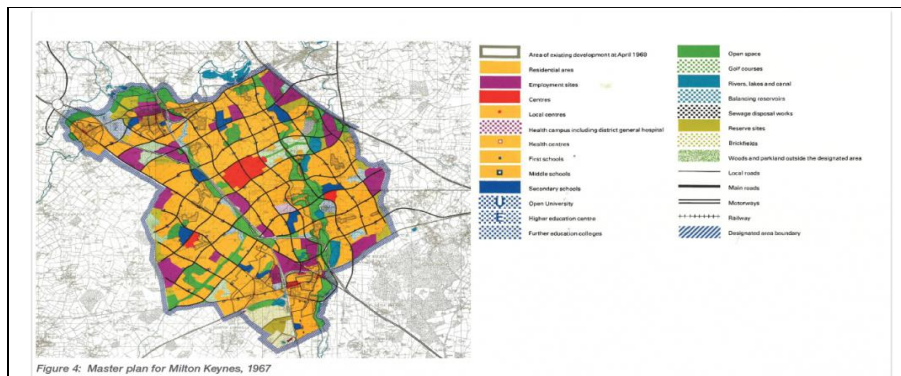
13 December	Local Housing Company (LHC) - Application Submission Delegated Decision Councillor Middleton (Cabinet member for Resources) Officer Report and Annexes (if applicable) Stuart Proffitt Director - Environment and Property	To consider the final submission of the LHC's stage 2 application for 'Registered Provider' status.
	Review of Fixed Penalty Notice Amounts - Environmental Protection Act - To consider approving revised costs for Delegated Decision Councillor Trendall (Cabinet member for Customer Services) Officer Report Environmental Protection Act 1990 and associated regulations relating to Fixed Penalty Notices Fixed Penalty	Nick Hannon Head of Environment and Waste Shaun Greig Senior Practitioner Tel: 01908 254566
	MK Connect Inflationary Increases, Service Changes and Funding To consider approving tariff increases and service changes, together with funding considerations, in response to rapid rises in market costs.	Delegated Decision Councillor Wilson-Marklew (Cabinet member for Climate and Sustainability) Officer Report and Annexes (if applicable) - None Stuart Proffitt Director - Environment and Property Adele Wearing Strategic Lead - Transport Tel: 07443 204898
	Consultation on the Draft City Plan Vision and Objectives, and Sustainability Appraisal Scoping Report To consider the commencement of a six-week consultation exercise on the draft Vision and Objectives, and the Sustainability Appraisal scoping report for the new City Plan.	Delegated Decision Councillor Peter Marland (Leader of the Council) Officer Report and Annex Strategy for 2050, Council Plan 2022/26

NEW 13 December 2022

Delegated Decision Litter Wardens - To consider the commencement of a tender exercise for contracted services of uniform patrols to issue Fixed Penalty Notices for environmental crimes, such as littering and dog fouling.

Delegated Decision by Councillor Trendall (Cabinet member for Customer Services) and Officer Report None Nick Hannon Head of Environment and Waste plus Shaun Greig (Senior Practitioner)

Tel: 01908 254566



Planning - Team Manager

Team Manager (07775 110809)

Chris Nash Development Management Manager chris.nash@milton-keynes.gov.uk

East Team

- Paul Keen Team Leader paul.keen@milton-keynes.gov.uk
- Katy Lycett Principal Planning Officer catherine.lycett@milton-keynes.gov.uk
- Robert Bridgen Principal Planning Officer robert.bridgen@milton-keynes.gov.uk
- Tamlin Barton Senior Planning Officer tamlin.barton@milton-keynes.gov.uk
- Rachel Larner Planning Officer rachel.larner@milton-keynes.gov.uk
- Sonia James Planning Officer sonja.james@milton-keynes.gov.uk
- Suluman Uddin Planning Officer suleman.uddin@milton-keynes.gov.uk
- Helen Pinder Development Services Officer helen.pinder@milton-keynes.gov.uk
- Chloe Rawlings Development Services Officer chloe.rawlings@milton-keynes.gov.uk
- Yvonne Apawu Development Services Officer yvonne.apawu@milton-keynes.gov.uk

West Team

- Elizabeth Verdegem Team Leader elizabeth.verdegem@milton-keynes.gov.uk
- Nick Lloyd-Davies Principal Planning Officer nick.lloyd-davies@milton-keynes.gov.uk
- Lakeisha Peacock Senior Planning Officer lakeisha.peacock@milton-keynes.gov.uk
- Charlotte Ashby Senior Planning Officer charlotte.ashby@milton-keynes.gov.uk
- Gavin Forrest Senior Planning Officer gavin.forrest@milton-keynes.gov.uk
- Hannah Hayward Planning Officer hannah.hayward@milton-keynes.gov.uk
- Lucy Baxter Planning Officer lucy.baxter@milton-keynes.gov.uk

Natalie Shafiroff Planning Officer natalie.shafiroff@milton-keynes.gov.uk
 Lauren Hitchings Planning Officer lauren.hitchings@milton-keynes.gov.uk
 Kayleigh Boulding Development Services Officer kayleigh.boulding@milton-keynes.gov.uk
 Paul Kitchener Development Services Officer paul.kitchener@milton-keynes.gov.uk
 Jennifer Pfeifer Development Services Officer jennifer.pfeifer@milton-keynes.gov.uk

Enforcement Team

Victoria Barrett Team Leader victoria.barrett@milton-keynes.gov.uk
 Zehn Sajid Enforcement Officer zehn.sajid@milton-keynes.gov.uk
 Tom Halsey Enforcement Officer thomas.halsey@milton-keynes.gov.uk
 Angela May Development Services Officer angela.may@milton-keynes.gov.uk

General Planning Enquiries

Planning Enquiries planning.enquiries@milton-keynes.gov.uk
 Planning Enforcement planning.enforcement@milton-keynes.gov.uk
 Public Access queries planning.services@milton-keynes.gov.uk

Did you know that you can now search for planning applications specifically in your parish or ward on the weekly list?


The Public Access for Planning website allows you to filter your search by a parish or ward. The list is interactive allowing you to access the details and documents relating to applications on the list by clicking on them.

Planning applications	Weekly list October 2022
Planning Buddy! Rachel Larner Planning Officer rachel.larner@milton-keynes.gov.uk 07554 338790	<ul style="list-style-type: none"> Bow Brickhill Parish Council Little Brickhill Parish Council
Planning Buddy! Sonia James Planning Officer sonia.james@milton-keynes.gov.uk 07775 111178	<ul style="list-style-type: none"> Walton Community Council
Planning Buddy! Senior Planning Officer charlotte.ashby@milton-keynes.gov.uk 07795 475595	<ul style="list-style-type: none"> Wavendon Parish Council
Planning Buddy! Katy Lycett Principal Planning Officer	<ul style="list-style-type: none"> Woburn Sands Town Council

katy.lycett@milton-keynes.gov.uk 07795 475584	
Planning Applications	
Application no: 22/02950/HOU Town and Country Planning Act 1990 (As Amended) Town and Country Planning (Development Management Procedure) Order 2015 Proposal: Proposed erection of a first floor side/front and a single storey rear extension. At: 3 Holst Crescent Browns Wood Milton Keynes MK7 8DQ	<ul style="list-style-type: none"> • Walton
Application no: 22/02930/TPO Proposal: The removal of major dead wood of an Oriental Plane (T1962) protected by Milton Keynes Council Tree Preservation Order no. PS/540/15/6 and the stem reduction by 7mtrs of a Silver Maple (T1966), due to the recent failure of 1 of 3 co-dominant stems and one of the stems overhangs a garage, the removal of major dead wood of a Common Lime (T0552), the crown reduction to 7mtrs of a Yew Tree (T2211) to leave monolith as one half of the crown has failed due to included bark union at 3mtrs from ground, protected by Milton Keynes Council Tree Preservation Order no. PS/540/15/47 At: Wavendon House Estate Wavendon House Drive Wavendon	<ul style="list-style-type: none"> • Wavendon
Application no: 22/02940/TPO Proposal: Crown reduction by 2.5-3 metres in height all over to the top of crown and sides, the removal of unnecessary epicormic growth within the canopy, and removal of basal growth and epicormic growth at the base of Lime (T1) tree. At: 64 Weathercock Lane Woburn Sands Milton Keynes MK17 8NY	<ul style="list-style-type: none"> • Woburn Sands
Application no: 22/02902/HOU Proposal: The erection of a part single, part two storey rear extension, bay window to front & part garage conversion At: 73 Elm Grove Woburn Sands Milton Keynes MK17 8QA	<ul style="list-style-type: none"> • Woburn Sands
Application no: 22/02553/HOU Proposal: Erection of a two storey side and single storey rear extension with balcony and extended roof canopy At: 3 Farjeon Court Old Farm Park Milton Keynes MK7 8RE	<ul style="list-style-type: none"> • Walton

<p>Application no: 22/02853/HOU Proposal: The erection of a proposed single storey side extension. First floor extension above existing garage and two-storey front/side extension with roof lights. Single storey rear extension. New bay window to front. At: 5 Greenways Bow Brickhill Milton Keynes MK17 9JP</p>	<ul style="list-style-type: none"> • Bow Brickhill
<p>Application no: 22/02711/NMA Proposal: Non-material amendment to permission ref. 22/01012/FUL, seeking a front and rear window to the side extension and replacement of the rear kitchen window with patio doors; relating to the erection of a single storey side extension and the raising of the roof and new roof lantern on existing single storey rear extension</p>	<ul style="list-style-type: none"> • Woburn Sands / Wavendon
<p>Application no: 22/02877/DISCON Proposal: Approval of details required by conditions (Construction Environmental Management Plan) of permission ref. 20/02188/OUT At: Woburn Sands Garden Centre Newport Road Wavendon Milton Keynes MK17 8UF</p>	<ul style="list-style-type: none"> • Woburn Sands
<p>Application no: 22/02602/HOU Proposal: Demolition of the existing side conservatory and the erection of a 2 storey side extension incorporating a Juliet balcony. Storm canopy in a cast stone finish to the front of the house with 2 pillars. New rear fascia, soffit, barge boards and guttering to the gable end to match the existing house. New external windows and doors. Landscape changes including the partial removal of hedge for proposed new driveway At: Bryer Lea 2 Parkway Woburn Sands Milton Keynes MK17 8UH</p>	<ul style="list-style-type: none"> • Wavendon
<p>Application no: 22/02658/HOU Proposal: The demolition of existing conservatory and erection of a single storey rear extension At: 15 Trumpton Lane Wavendon Gate Milton Keynes MK7 7SS</p>	<ul style="list-style-type: none"> • Walton
<p>Application no: 22/02811/LBC Proposal: Listed Building Consent for the erection of a single storey rear extension with PV panels. The demolition of the existing corridor and insertion of new entrance door. New canopy to side entrance door. Reinstated arched windows to side elevation. Replacement of cement render and replacement with insulated lime render. The erection of a side infill extension with roof light At: 2 Lower End Road Wavendon Milton Keynes MK17 8AN</p>	<ul style="list-style-type: none"> • Wavendon
<p>Application no: 22/02834/HOU Proposal: The erection of a single storey rear extension, second storey side extension over ground</p>	<ul style="list-style-type: none"> • Walton

floor garage & the proposed replacement of the two windows on the rear elevation with juliet balconies At: 3 Britten Grove Old Farm Park Milton Keynes MK7 8PP	



MK City Council is extending a contract to continue supporting former rough sleepers and ensure they don't end up back on the streets.

Its 'Housing First' programme aims to get rough sleepers into accommodation and provide support to help them work through the often complex reasons they became homeless in the first place, sometimes related to relationship breakdowns, family eviction or loss of private rented accommodation. The programme has helped more than 150 people in the last three years.

MK City Council is now making a decision to approve a six month extension of the contract on 14 November. During that time, further long-term initiatives for rough sleepers will be considered.

The City Council's provides vital services for people sleeping rough or those at risk of homelessness. Earlier this year, it opened a new shelter in Central Milton Keynes which has led to secure homes for 30 rough sleepers, with nearly 90 people using the shelter. Former rough sleepers stay for a short period before accessing further assistance.

This is the latest of multiple initiatives in recent years to support rough sleepers and help them secure a life off the streets for good. As a result, the number of people sleeping rough in the city has dropped significantly. A recent review by the team showed that 24 people were sleeping rough in Milton Keynes, which is fewer than the number of beds available through the City Council's provision, meaning everyone needing a bed could be found one. Everyone found sleeping rough is offered accommodation and support. On this occasion only one person took up the offer but the dedicated outreach team continue to make daily rounds to offer support.



Hate Crime Awareness Week

**HIDDEN
HARM**

Open your eyes to abuse.

We all have a role to play in keeping people safe from harm.
Find out more: [thamesvalley.police.uk/hiddenharm](https://www.thamesvalley.police.uk/hiddenharm)

Thank you for getting in touch. This year Community Safety MK Council and TVP are supporting communities and organisations in their own activities. This means that we will support by way of attendance at activities and events where possible, publicise your activities across our socials and platforms and happy to meet with you to explore your ideas ahead of October. We have reached out to communities and colleagues we already work with to encourage them to consider ways of engaging the wider public on the strands that they may represent, be it race, religion, disabilities, sexual orientation or trans identity.

We would like to encourage all to take part in any way that they feel would be appropriate and that they have capacity for, to enable a city-wide discussion about Hate Crime on that week.

Please see National Hate Crime Awareness Week - [Nationalhcaaw](https://nationalhcaaw.org/) and Hate Crime Awareness Week - [Educate Against Hate](https://www.educateagainsthate.com/) for more information

<https://nationalhcaaw.org/> and <https://www.educateagainsthate.com/blog/posts/hate-crime-awareness-week/>

Jennifer Hill C0531 | Community and Diversity Officer | Pronoun She/Her
Telephone 101 | Internal 3416326 | External 01865 541319 | Mobile 07866 162481
Address Milton Keynes Central Police Station, Thames Valley Police, 302 North Row, Witan Gate East, Milton Keynes, Bucks MK9 2DS

“HEY
YES WE’RE
WELL AND
HAPPY..
WE MUST GET
TOGETHER.”

“DON’T
WORRY MUM
I JUST CAN’T
SPEAK NOW.
PLEASE PASS
MY LOVE TO
DAD.”

Locally - PC Rob Childs – 07974 970568 or robin.childs@thamesvalley.pnn.polic.uk

<https://www.thamesvalley.police.uk/police-forces/thames-valley-police/areas/c/2018/thames-valley-alert/>

You can sign up to **Thames Valley Alert** via email, text, or even receive voice messages about what’s happening in your local area.

The service is completely tailored to you, so you can choose what sort of alerts to receive – whether you’d like:

news on local incidents, community news, to be alerted to significant or high priority messages.

When you sign up to Thames Valley Alert (a free service) you'll be given login details that allow you to change your settings at any time. There's also a business watch service and a country watch service.

If you’d like to sign up to Thames Valley Alert, you can:

join via the Thames Valley Alert website, or,

download the free Thames Valley Alert app by visiting the Apple store or Google Play store. If you already have an Alerts account, you can sign into the app with the same login details.

Stakeholder Briefing



**Month of Action against Violence – Milton Keynes
December 2022**

The city of Milton Keynes is working together this month to tackle all forms of violence.

The month of action against violence in December was marked today (1/12) with the arrival of the National Monument Against Violence and Aggression.

The monument, also known as the Knife Angel, arrived in the city today and will be located outside Stadium MK throughout December and into early January.

The Knife Angel is a 27ft sculpture, made from approximately 100,000 bladed weapons collected in knife amnesty bins during police operations across the country.

Created by the British Ironwork Centre, the monument travels to locations around the UK as a focal point to help educate children and adults about the harmful effects that violent behaviour has on communities.

The month of action in Milton Keynes is a partnership between Thames Valley Police, the Office for the Police and Crime Commissioner, Milton Keynes City Council, MK Dons Sports and Educational Trust and The Safety Centre Charity Hazard Alley.

Throughout the month there will be numerous activities, designed by those who live and work in the city to bring together schools and parents, voluntary sector organisations, places of worship, community groups, local venues and businesses to tackle violence in all its forms.

This includes knife crime, which has resulted in a number of lives being tragically lost in the city over the years, but also domestic abuse, hate crime, bullying and other forms of violence and aggression.

Deputy Commander for Milton Keynes policing area, Chief Inspector Euan Livingstone said: "Whilst serious violence in Milton Keynes has reduced over the last three years, we know that violence, particularly knife crime, is a real concern for our communities and there is a clear desire in our city to work together to end violence.

"The festive season typically brings communities together, therefore we want the arrival of Knife Angel to our city this December to act as a catalyst for encouraging conversation about violence and aggression.

"However, it is vital that the month of action leaves a legacy, and as communities we all continue to work together to make a strong and sustained difference to serious violence in our city.

"Everyone should feel safe to live and work in Milton Keynes."

Police and Crime Commissioner for the Thames Valley, Matthew Barber said: "It is a privilege to host the Knife Angel in Milton Keynes.

"This powerful sculpture reminds us of the devastating impact of violence and aggression as well as being a symbol for change.

"I and partners across Milton Keynes are committed to working together in an effort to end the culture of knife carrying and violence.

"The engagement and educational activities taking place during the month of action will help to open up discussions, which can ultimately lead to changes in attitudes and behaviours.

"I encourage residents of Milton Keynes to visit the Knife Angel during December and get involved in the range of activities taking place."

CEO of the Safety Centre, Maya Joseph-Hussain said: "We are excited to welcome the Knife Angel to Milton Keynes this month and deliver life-saving education to 1,500 local primary school students as part of the month of action against violence and aggression.

"Our education team will be creating safe spaces for lifesaving conversations around knife crime and the choices and consequences of knife crime to year 5-6 students across Milton Keynes.

"Our education programme can save lives through impactful, age appropriate learning and vital conversations about the consequences of being involved in knife crime, helping building safe and flourishing communities here in Milton Keynes and across our region in the future."

There will be numerous public activities during the month of action, including an opening ceremony at MK Dons home match against Burton this Saturday (3/12), an anti-violence art competition for children, a candlelit procession, and a carol service.

For more details about these public activities, please visit the following webpage - Milton Keynes takes a stand against violence | Milton Keynes City Council (milton-keynes.gov.uk)

If you are a victim of violence, you know or suspect someone who is a victim of violence, or you have any information about violent crime, please contact the police or one of our partners.

In an emergency, always call 999.

If you can't speak, call 999 and press 55; then stay on the line, listen to the call handler and answer questions, either by pushing buttons or coughing; the call handler will do everything they can to determine your location so they can deploy officers to you; if you can say one thing, please say your address.

If it's not an emergency, you can call 101 or make a report online on our website.

If you don't want to speak to the police, you can contact Crimestoppers anonymously on 0800 555 111 or via their website. Also, the National Domestic Abuse Helpline is free and open 24 hours a day on 0808 2000 247.



Birds found dead at popular Caldecotte lake

following confirmed bird flu cases

The Parks Trust has today (29/11) confirmed that some birds have died at popular Milton Keynes lake from Bird Flu.

The Parks Trust has today released a statement confirming that birds have died at a popular lake in Milton Keynes from Bird Flu.

"We have had confirmation that some birds have died at Caldecotte Lake from Bird Flu," The Parks Trust wrote on social media.

"Defra UK confirm that human transmission is low."

Currently, all poultry and captive birds must be housed in England until further notice due to an increase in the number of detections of avian influenza in wild birds and on commercial premises.

The wild bird risk across Great Britain has increased from high to very high and the risk to poultry with stringent biosecurity remains at medium, according to the Department for Environment, Food & Rural Affairs.

Dr Christine Middlemiss, the UK's Chief Veterinary Officer, said: "We are seeing a growing number of bird flu cases on commercial farms and in backyard birds across the country driven by high levels of disease within wild birds. Unfortunately we expect the number of cases to continue to rise over the coming months as migratory birds return to the UK, bringing with them further risk of disease that can spread into our kept flocks.

"We're taking action already by implementing a national Avian Influenza Prevention Zones and housing order, but it is important that all bird keepers – wherever they are in the country – ensure that cleanliness and hygiene are at the forefront of their minds to keep their flocks safe and limit the impact of the outbreak."

The Parks Trust say: "To report a dead bird, please contact us at 01908 233600 or communityranger@theparkstrust.com."

Anglian Water – Drainage & Water Management Plan



Ampthill pipeline

We're building a new 2km water pipeline, and a new pumping station, in the Ampthill and Woburn area. You can see our proposed pipeline route here.

<https://www.anglianwater.co.uk/siteassets/hidden/iya/becky/ampthill/ampthill-pipeline.png>

We're committed to providing reliable and resilient sewerage and water services to you and four million other residents in our region. That's why we're planning a project to install 2km of new pipes and a new pumping station between Brickhill Copse pumping station and Bow Brickhill reservoir.

The pipeline is just one part of an interconnected network of pipes we are constructing across the region, as set out in our Water Resources Management Plan so everyone has access to safe, clean, and plentiful water for years to come.

If you would like to know more about our Strategic Pipeline programme you can see our plans on our website here. <https://www.anglianwater.co.uk/about-us/our-strategies-and-plans/new-water-pipelines/>



Conservative MP Iain Stewart has been elected as the new Chair of the Transport Select Committee.

Iain Stewart, Conservative MP for Milton Keynes South, has been elected as Chair of the Transport Select Committee, beating five other candidates.

Iain Stewart was first elected as Member of Parliament for Milton Keynes South in May 2010 and was soon after elected to sit on the Transport Select Committee before being appointed Parliamentary Private Secretary to the Secretary of State for Transport, Sir Patrick McLoughlin.

The Deputy Speaker announced on Wednesday (16 November) that Iain Stewart has been elected Chair of the Transport Committee. The Milton Keynes South MP said: "I am delighted to have been entrusted by the House to chair this vital committee and thank all who supported me.

"I have a real passion for, and experience in, transport issues and I am very much looking forward to working with colleagues on the committee to complete the existing programme of work and establish fresh inquiries

Cllr David Hopkins – December 2022